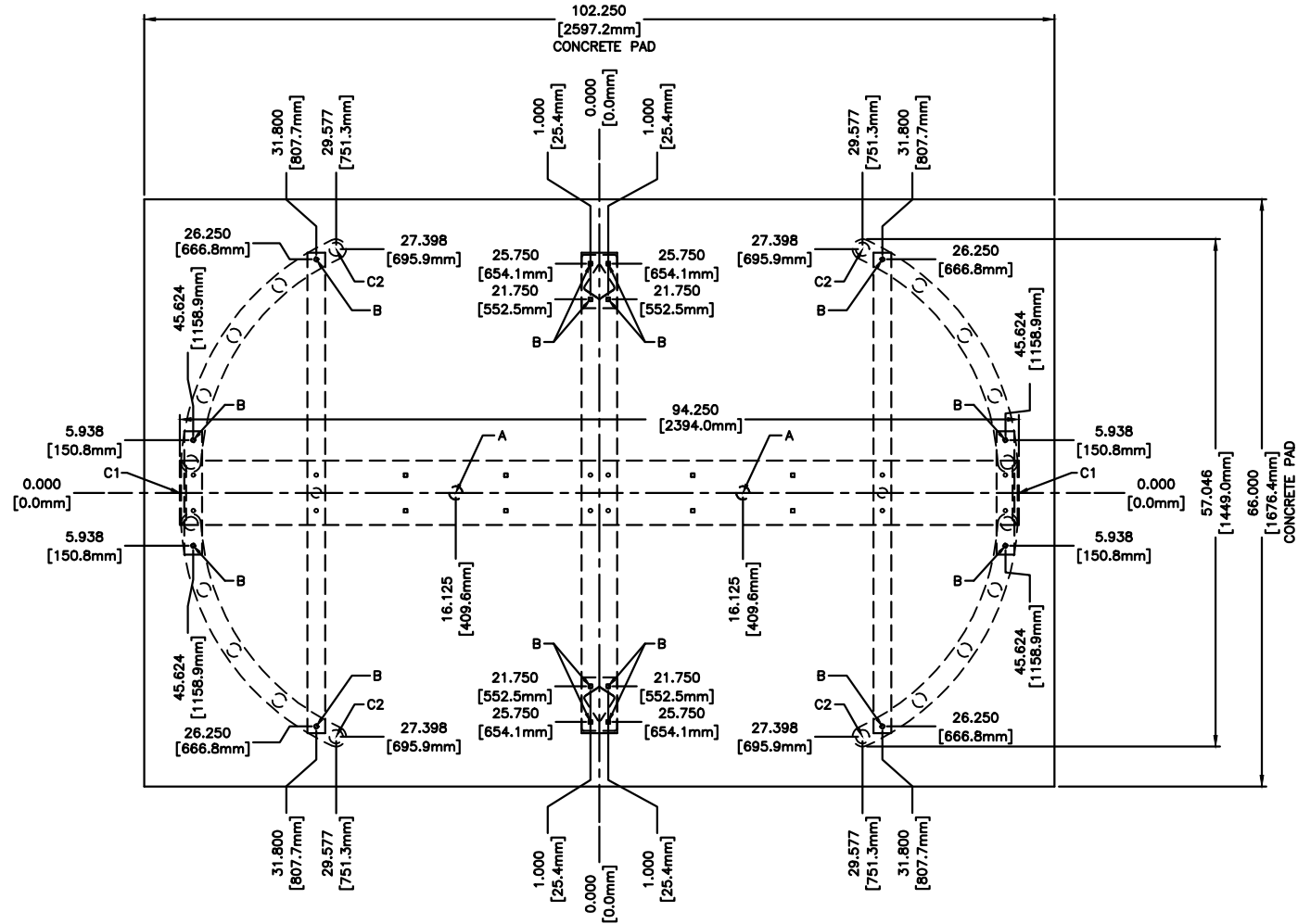


REVISION HISTORY		
SYMBOL	DESC.	DATE

FOR USE ON ALL HS427-T MODELS



ANCHOR POINTS

- A= ϕ .625 X 4.500 STAINLESS STEEL CONCRETE ANCHOR QTY 2
- B= ϕ .375 X 4.500 STAINLESS STEEL CONCRETE ANCHOR QTY 12

SUGGESTED CONDUIT LOCATION

- C1 = THROUGH MAIN CHANNEL END CAP (TYP BOTH SIDES)
- C2 = THROUGH VERTICAL TOKE TUBE

CONCRETE PAD NOTE:

POUR PAD 4.000 [101.6mm] - 6.000 [152.4mm] THICK,
AND INSURE IT IS LEVEL \pm .125 [3.1mm]

MATERIAL:	SCALE: .5=12	APPROVED BY:	DRAWN BY: LC III
N/A	DATE: 1/16/14		REVISED:
FINISH:	CONTROLLED ACCESS, INC. 1636 West 130th Street Brunswick, Ohio 44212		
TOL. UNLESS OTHERWISE SPEC.	330-273-6185 FAX 330-273-4468 USA 1-800-942-0829 FAX 1-800-942-0828		
.X \pm .1 .XX \pm .03	.XXX \pm .015 ANGLES .5°		
			HS427-T ANCHOR POINTS/CONDUIT