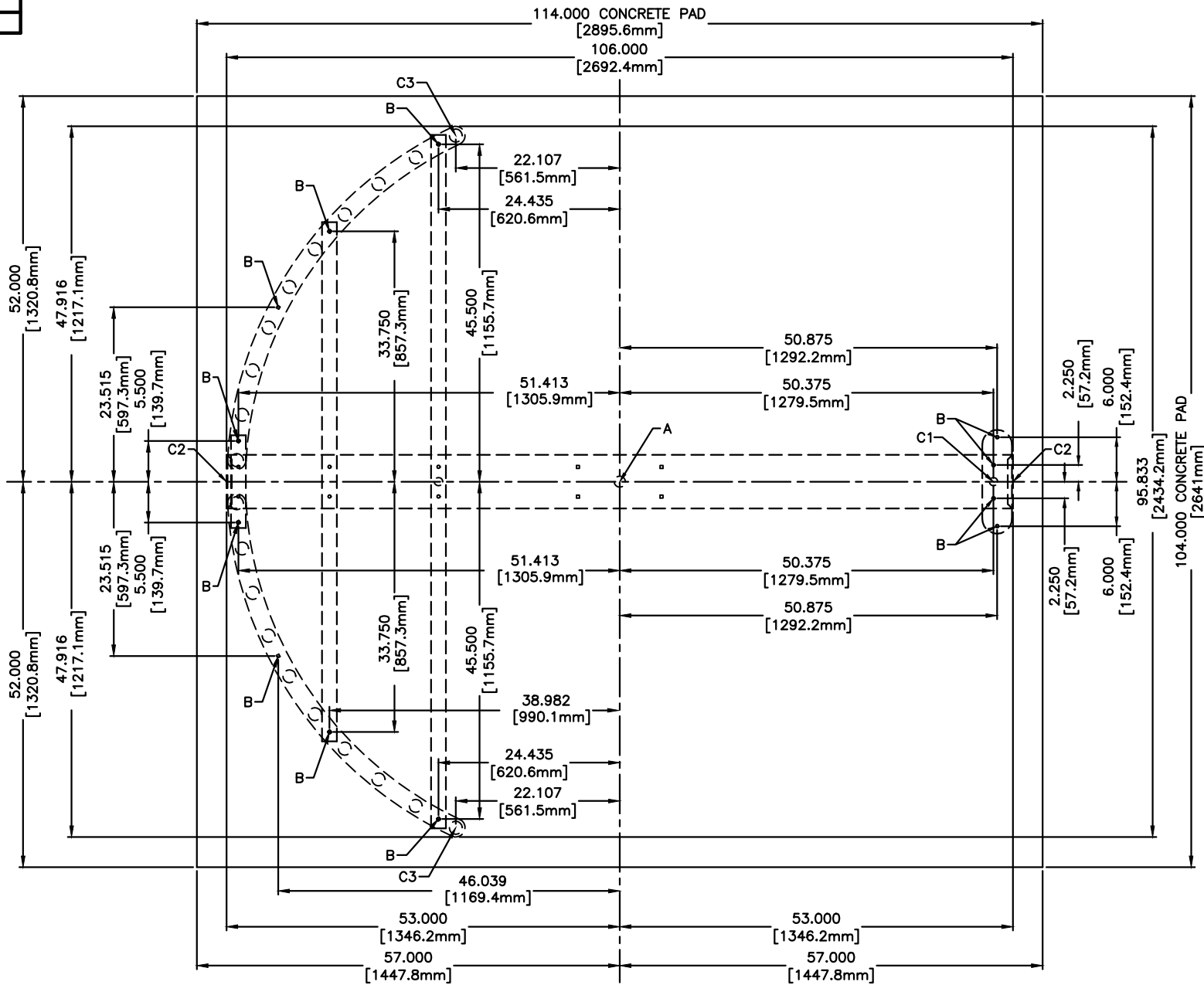


REVISION HISTORY		
SYMBOL	DESC.	DATE

FOR USE ON ALL HS448 MODELS



ANCHOR POINTS
 A= ϕ .625 X 4.500 STAINLESS STEEL CONCRETE ANCHOR QTY 1
 B= ϕ .375 X 4.500 STAINLESS STEEL CONCRETE ANCHOR QTY 12

SUGGESTED CONDUIT LOCATION
 C1 = THROUGH VERTICAL BARRIER (PREFERRED)
 C2 = THROUGH MAIN CHANNEL END CAP (TYP BOTH SIDES)
 C3 = THROUGH VERTICAL TOKE TUBE

CONCRETE PAD NOTE:
 POUR PAD 4.000 [101.6mm] - 6.000 [152.4mm] THICK, AND INSURE IT IS
 LEVEL \pm .125 [3.1mm]

DO NOT SCALE DRAWING

MATERIAL: N/A	SCALE: 1=20	APPROVED BY:	DRAWN BY: LC III
FINISH: TOL. UNLESS OTHERWISE SPEC. .X \pm .1 .XX \pm .03	DATE: 1/14/14	REVISED:	330-273-6185 FAX 330-273-4468 USA 1-800-942-0829 FAX 1-800-942-0828
CONTROLLED ACCESS, INC. 1636 West 130th Street Brunswick, Ohio 44212		HS448 ANCHOR POINTS/CONDUIT	