

The High-Security Series

HS427-T | HS430-T

Full-Height Turnstile (Tandem) | Interior & Exterior Application

Controlled Access manufactures the most reliable full-height turnstiles available. The High-Security Series units can be engineered to meet all your security and control requirements, and can be created as stand-alone units, or as part of an integrated system. Available in stainless steel (304 or 316), carbon steel with powder coating, or hot-dipped galvanized finish. These units can be fitted for any application with leading edge technology and features.

Controls and Interfaces:

- Biometric Integration
- Fail-Open or Fail-Secure Locking
- Card Readers
- Push-Button and Wireless Remotes
- Electronic/LCD Counters
- Manual Key Override - both directions
- Indicator Lights



Size Options:

(pedestrian clearance)

HS427-T: 27" (685.8mm)

HS430-T: 30" (762mm)

304 Stainless, No. 4 Satin finish (shown)



Optional black or safety orange end caps available.



Hot-dipped galvanized finish. Also available in stainless steel or power coated finishes.



Standard powder coating color selections:

Additional colors available and can be quoted upon request.

60% Gloss Black	60% Gloss White	RAL 1013 Oyster White	RAL 9007 Grey Aluminum	RAL 5023 Distant Blue	RAL 5010 Gentian Blue	RAL 6002 Leaf Green	RAL 8028 Terra Brown

We're the #1 Choice of Top Architects, Security Pros and Engineers

For more than 30 years, Controlled Access has been the globally trusted name in pedestrian control equipment. Made in Ohio and shipped worldwide, we are the first choice of leading architects, facility managers, security consultants, and engineers. Whether your project requires high security full-height turnstiles, waist high units, or matching ADA accessible gates, Controlled Access is the secure choice. We're experienced in access control systems, from card readers to biometric scanning, to give you the power to control access.

	Depth	Width	Passage Width	Passage Height	Overall Height
	A*	B*	C*	D*	E*
HS427-T	59.375" (1508.1mm)	94.250" (2394mm)	27" (685.8mm)	84" (2133.6mm)	91" (2311.4mm)
HS430-T	62" (1574.8mm)	102" (2590.8mm)	30" (762mm)	84" (2133.6mm)	91" (2311.4mm)

* Dimensions subject to change without notice. See CAD drawings on reverse side

CONTROLLED ACCESS, INC.
Turnstiles and ADA Gates
The Leader in Pedestrian Access Control

1535 Industrial Parkway South
Brunswick, Ohio 44212
www.controlledaccess.com

PH: 330.273.6185 | Fax: 330.273.4468
Toll-Free Ph: 800.942.0829 | Toll-Free Fax: 800.942.0828
E-mail: sales@controlledaccess.com

The High-Security Series

HS427-T | HS430-T

Full-Height Turnstile (Tandem) | Interior & Exterior Application

Applications:

Ideal for controlling orderly flow of foot traffic in both indoor and outdoor settings

Design & Construction:

- Designed for secure operation with aesthetics in mind
- Featuring fully welded exterior components
- Minimal exposed stainless steel hardware
- Heavy gauge materials meeting ASTM standards

Dimensions:

HS427-T

- Pedestrian Clearance: 27" (685.8mm)
- Width: 94.250" (2394mm)
- Depth: 59.375" (1508.1mm)

HS430-T

- Pedestrian Clearance: 30" (762mm)
- Width: 102" (2590.8mm)
- Depth: 62" (1574.8mm)

Arm & Barrier Tubing Sizes (HS427-T & HS430-T):

- Standard: 1 1/2" (38.1mm) diameter 14 gauge
- Optional: 1 3/4" (44.4mm) diameter 14 gauge (16 gauge - Stainless Steel models)

All Models:

- Overall Exterior Height: 91" (2311.4mm)
- Passage Height: 84" (2133.6mm)
- Removal of Cover: Minimum of 4" needed

* Dimensions are subject to change without notice

HS336 - Back
(stainless steel
with optional
mesh push bar)



Available Finishes:

- Hot dipped galvanized carbon steel
- Carbon steel with powder coating
(standard color is black/ other colors available upon request)
- Our signature 304 stainless steel, No. 4 satin finish, or 316 stainless

Operation Features 6500 Series Control Head:

- Auto-indexing (self-centering) with adjustable hydraulic shock suppression
- Hardened tool steel locking bars, cam and roller assemblies
- Permanently lubricated bearings
- Your choice of manual or electronic control on both directions
- Nearly universal integration to any number of access control systems
- Your choice on each electronic direction of locking or unlocking on power failure

Options:

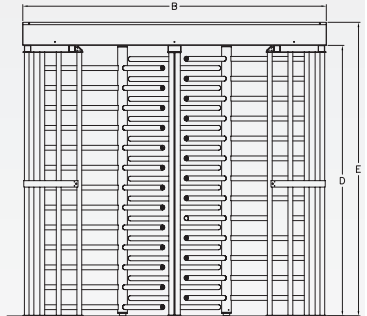
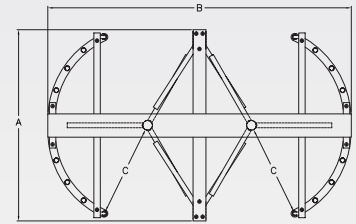
- Card reader mounting plates
- Daylight visible indicator lights
- Bi-directional key overrides
- Lockout bar (padlock not included)
- Decorative arm caps
- Stainless steel overhead full canopy
- Half canopy (covers passageway)
- 8 digit key resettable LCD counter with seven year lithium battery
- Cold weather package, including thermostat controlled heater and insulated mainframe
- Push button and wireless remotes
- Heel guard arm covers
- Additional options available upon request

Warranty:

Units are warranted against defects in materials and workmanship for a period of one year from date of delivery. See warranty information for specific details.

Matching Swing Gate available:

(see model HS336 and model HS348 Manual Passage Gate information)



* Dimensions are approximate based on chart on reverse side

Electrical Specifications:

(per rotor)

Input Voltage: 100-240 VAC

Input Current: 1.3 - .55 A

Frequency: 50/60 Hz

Storage Temperature: -40 to 158°F

Operating Temperature: -4 to 131°F

(Cold weather package available)

Operating Voltage: 24VDC

Operating Current: 1.2 A (typical)

Standards and Codes:

Austenitic stainless steel:
ASTM A240, A249, A276

Hot rolled steel:
AISI C-1020, AISI C-1018

Hot dipped galvanizing:
ASTM A-143, ASTM A-153-80

All fasteners provided meet IFI ANSI/
ASME Fastener Standards

American Welding Society (AWS)
Standard D 1.1



The 6500 Series Control Head is certified to conform to the following standards:
UL 294, UL 325, UL Subject 2593, CAN/ULC S319 & CSA C22.2#247



Controlled Access, Inc. is certified by Advantage International Registrar to be an ISO 9001:2015 company