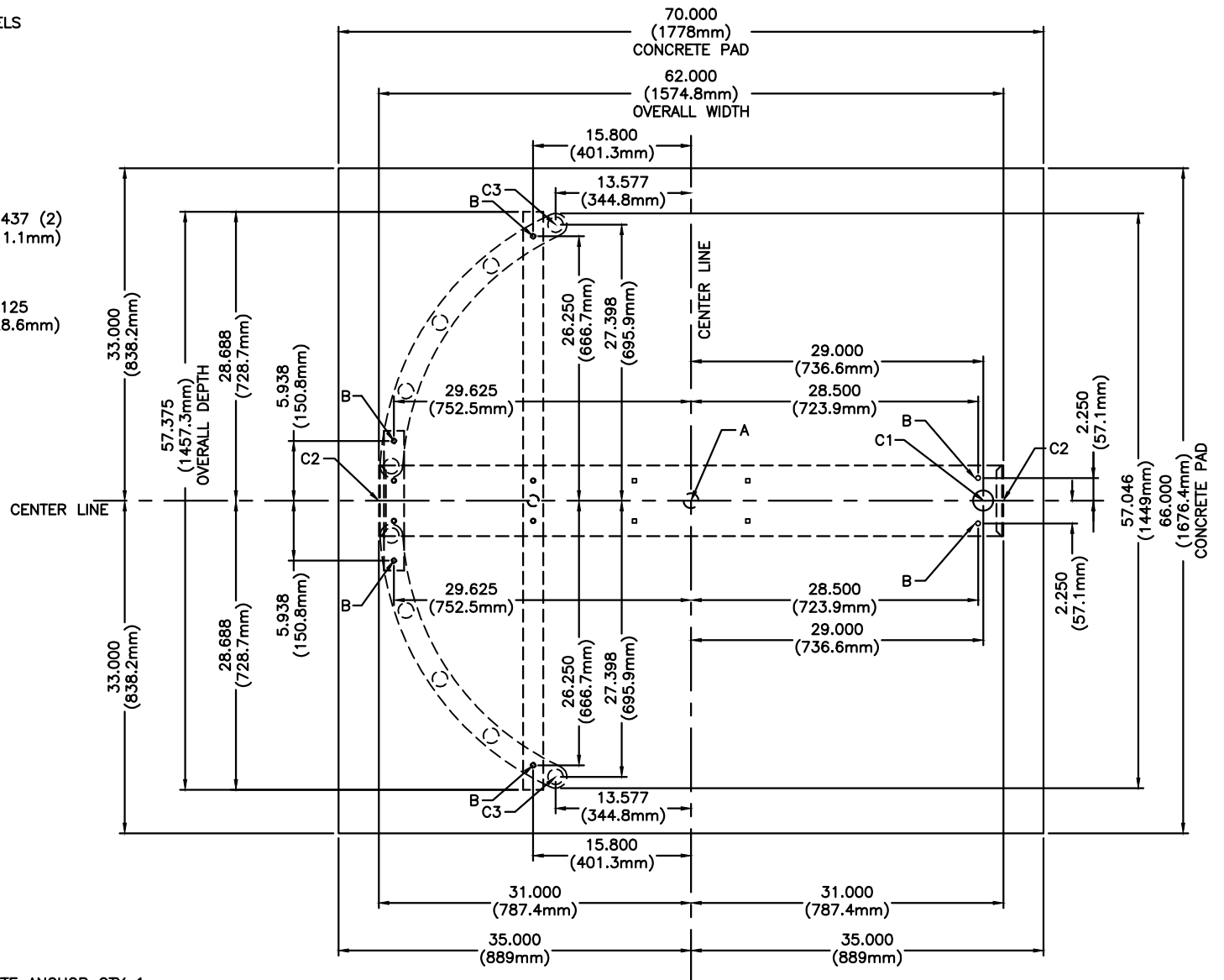
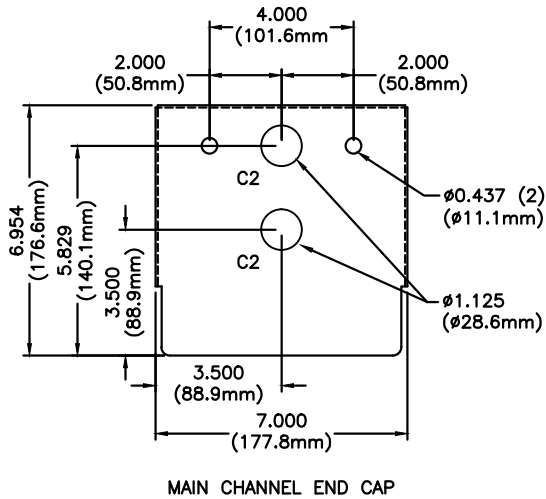


FOR USE ON STAINLESS STEEL HS427-S MODELS



ANCHOR POINTS

- A = Ø.625 X 4.500 STAINLESS STEEL CONCRETE ANCHOR QTY 1
- B = Ø.375 X 4.500 STAINLESS STEEL CONCRETE ANCHOR QTY 6

SUGGESTED CONDUIT LOCATION

- C1 = THROUGH VERTICAL BARRIER (PREFERRED)
- C2 = THROUGH MAIN CHANNEL END CAP (TYP BOTH SIDES)
- C3 = THROUGH VERTICAL YOKE TUBE

CONCRETE PAD NOTE:

POUR PAD 4.000 (101.6mm) – 6.000 (152.4mm) THICK, AND ENSURE IT IS LEVEL ±.125 (3.1mm)

PROPRIETARY AND CONFIDENTIAL
 THIS DRAWING IS THE PROPERTY OF CONTROLLED ACCESS, INC., AND CONTAINS PROPRIETARY INFORMATION. IT MAY NOT BE COPIED, REPRODUCED OR TRANSMITTED IN ANY MANNER TO A THIRD PARTY WITHOUT PRIOR WRITTEN PERMISSION OF CONTROLLED ACCESS, INC.

MATERIAL: 304 STAINLESS STEEL	SCALE: 1=16 DATE: 1/13/14	APPROVED BY:	DRAWN BY: LC III
FINISH: NO. 4 SATIN	TOL. UNLESS OTHERWISE SPEC. .X ± .1 .XXX ± .015 .XX ± .03 ANGLES .5°	REVISED: 10/2018	330-273-6185 FAX 330-273-4468 USA 1-800-942-0829 FAX 1-800-942-0828
CONTROLLED ACCESS, INC. 1636 West 130th Street Brunswick, Ohio 44212			HS427-S-SS ANCHOR POINTS\CONDUIT 2018