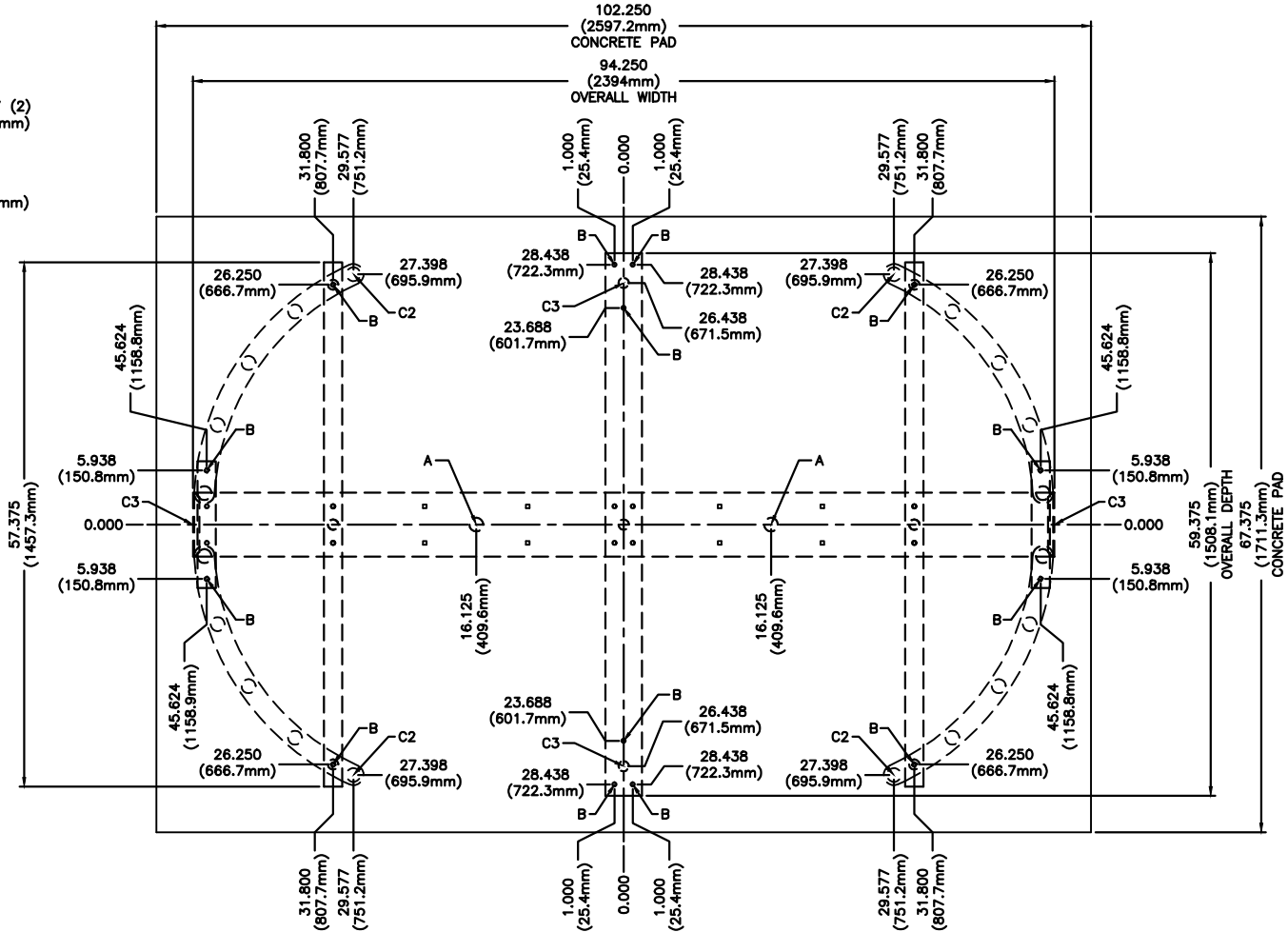
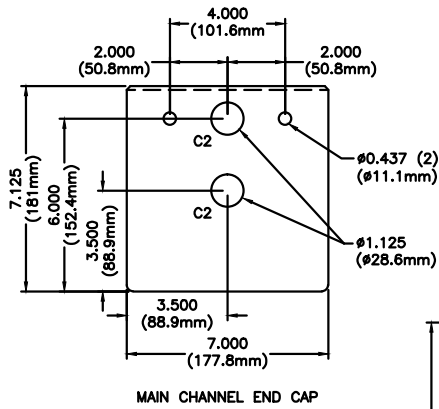


FOR USE ON GALVANIZED OR POWDER COATED
HS427-T MODELS



ANCHOR POINTS

- A = \emptyset .625 X 4.500 STAINLESS STEEL CONCRETE ANCHOR QTY 2
- B = \emptyset .375 X 4.500 STAINLESS STEEL CONCRETE ANCHOR QTY 12

SUGGESTED CONDUIT LOCATION

- C1 = THROUGH VERTICAL BARRIER (PREFERRED)
- C2 = THROUGH MAIN CHANNEL END CAP (TYP BOTH SIDES)
- C3 = THROUGH VERTICAL YOKE TUBE

CONCRETE PAD NOTE:

POUR PAD 4.000 (101.6mm) - 6.000 (152.4mm) THICK,
AND INSURE IT IS LEVEL \pm .125 (3.1mm)

PROPRIETARY AND CONFIDENTIAL
THIS DRAWING IS THE PROPERTY OF CONTROLLED
ACCESS, INC., AND CONTAINS PROPRIETARY INFORMATION.
IT MAY NOT BE COPIED, REPRODUCED OR TRANSMITTED
IN ANY MANNER TO A THIRD PARTY WITHOUT PRIOR
WRITTEN PERMISSION OF CONTROLLED ACCESS, INC.

MATERIAL: N/A	SCALE: 1=20	APPROVED BY:	DRAWN BY: LC III
FINISH: TOL. UNLESS OTHERWISE SPEC. .X \pm .1 .XX \pm .03	DATE: 1/17/18		REVISED: 10/2018
CONTROLLED ACCESS, INC. 1636 West 130th Street Brunswick, Ohio 44212		330-273-6185 FAX 330-273-4468 USA 1-800-942-0829 FAX 1-800-942-0828	
HS427-T-GV\PC ANCHOR POINTS\CONDUIT 2018			