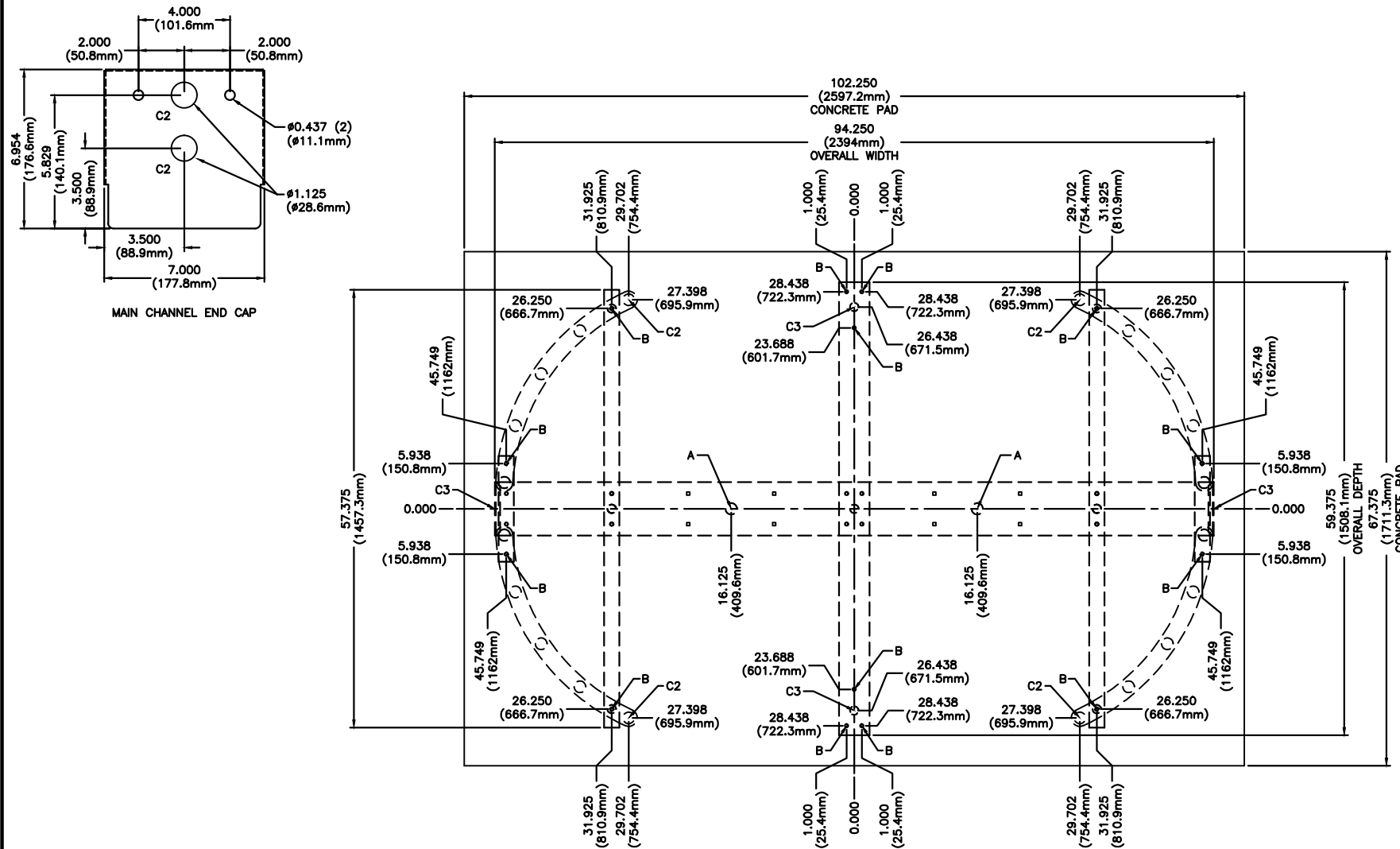


FOR USE ON STAINLESS STEEL HS427-T MODELS



ANCHOR POINTS

- A = 0.625 X 4.500 STAINLESS STEEL CONCRETE ANCHOR QTY 2
- B = 0.375 X 4.500 STAINLESS STEEL CONCRETE ANCHOR QTY 12

SUGGESTED CONDUIT LOCATION

- C1 = THROUGH VERTICAL BARRIER (PREFERRED)
- C2 = THROUGH MAIN CHANNEL END CAP (TYP BOTH SIDES)
- C3 = THROUGH VERTICAL YOKE TUBE

CONCRETE PAD NOTE:

POUR PAD 4.000 (101.6mm) - 6.000 (152.4mm) THICK, AND INSURE IT IS LEVEL ±.125 (3.1mm)

PROPRIETARY AND CONFIDENTIAL  
 THIS DRAWING IS THE PROPERTY OF CONTROLLED ACCESS, INC. AND CONTAINS PROPRIETARY INFORMATION. IT MAY NOT BE COPIED, REPRODUCED OR TRANSMITTED IN ANY MANNER TO A THIRD PARTY WITHOUT PRIOR WRITTEN PERMISSION OF CONTROLLED ACCESS, INC.

MATERIAL: N/A	SCALE: 1=20	APPROVED BY:	DRAWN BY: LC III
FINISH: TOL. UNLESS OTHERWISE SPEC. .X ± .1 .XX ± .03	DATE: 1/17/18	REVISED: 10/2018	

CONTROLLED ACCESS, INC.  
 1636 West 130th Street  
 Brunswick, Ohio 44212  
 330-273-6185  
 FAX 330-273-4468  
 USA 1-800-942-0829  
 FAX 1-800-942-0828  
 HS427-T-SS ANCHOR POINTS\CONDUIT 2018