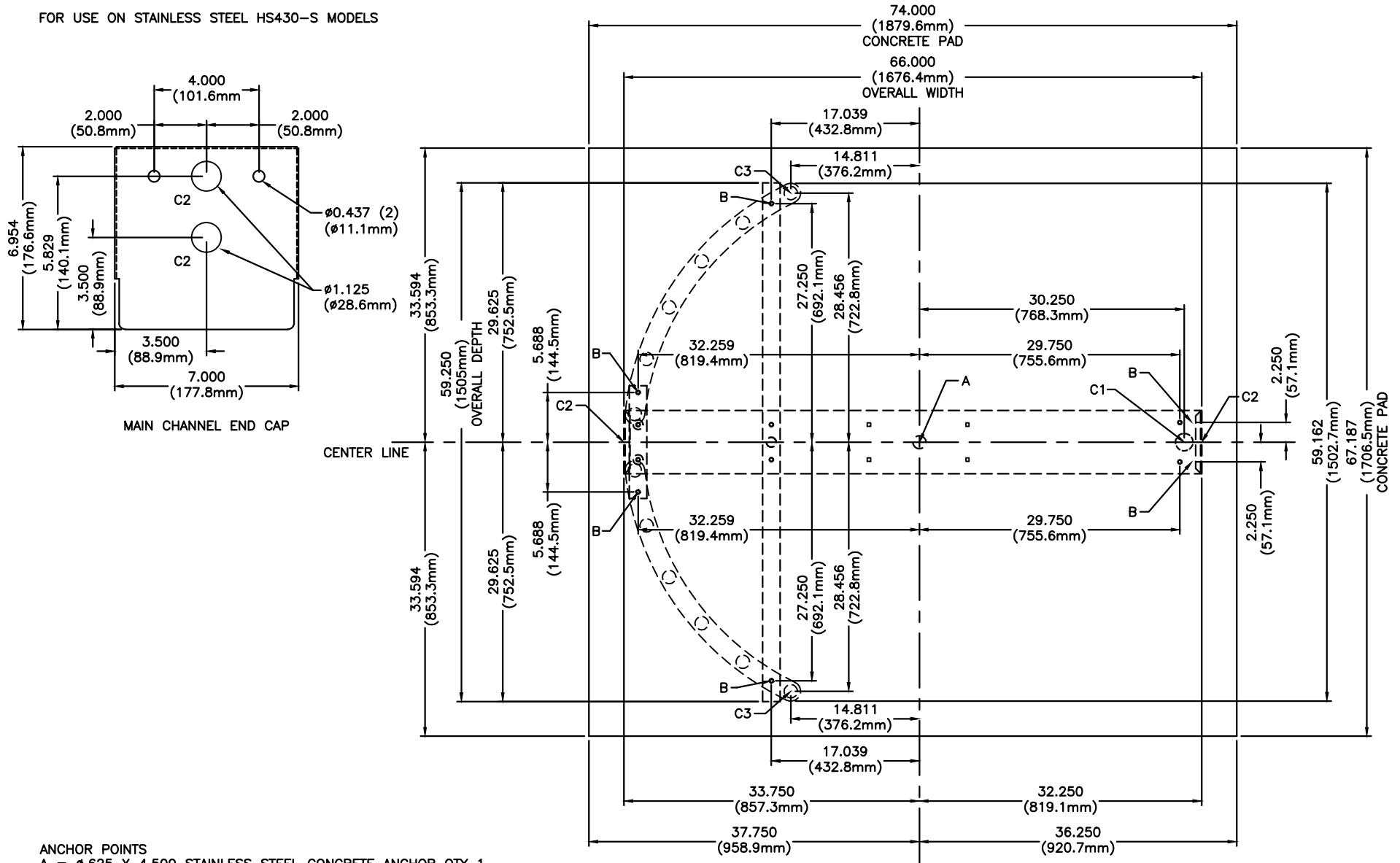


FOR USE ON STAINLESS STEEL HS430-S MODELS



ANCHOR POINTS
 A = ϕ .625 X 4.500 STAINLESS STEEL CONCRETE ANCHOR QTY 1
 B = ϕ .375 X 4.500 STAINLESS STEEL CONCRETE ANCHOR QTY 6

SUGGESTED CONDUIT LOCATION
 C1 = THROUGH VERTICAL BARRIER (PREFERRED)
 C2 = THROUGH MAIN CHANNEL END CAP (TYP BOTH SIDES)
 C3 = THROUGH VERTICAL YOKE TUBE

CONCRETE PAD NOTE:
 POUR PAD 4.000 (101.6mm) - 6.000 (152.4mm) THICK,
 AND ENSURE IT IS LEVEL \pm .125 (3.1mm)

PROPRIETARY AND CONFIDENTIAL
 THIS DRAWING IS THE PROPERTY OF CONTROLLED
 ACCESS, INC., AND CONTAINS PROPRIETARY INFORMATION.
 IT MAY NOT BE COPIED, REPRODUCED OR TRANSMITTED
 IN ANY MANNER TO A THIRD PARTY WITHOUT PRIOR
 WRITTEN PERMISSION OF CONTROLLED ACCESS, INC.

MATERIAL:
 304 STAINLESS STEEL

FINISH: NO. 4 SATIN
TOL. UNLESS OTHERWISE SPEC.
 .X \pm .1 .XXX \pm .015
 .XX \pm .03 ANGLES .5°

SCALE: 1=16
DATE: 1/13/14

APPROVED BY:
DRAWN BY: LC III
REVISED: 10/2018

CA CONTROLLED ACCESS, INC.
 1636 West 130th Street
 Brunswick, Ohio 44212
 330-273-6185
 FAX 330-273-4468
 USA 1-800-942-0829
 FAX 1-800-942-0828

HS430-S SS ANCHOR POINTS/CONDUIT 2018