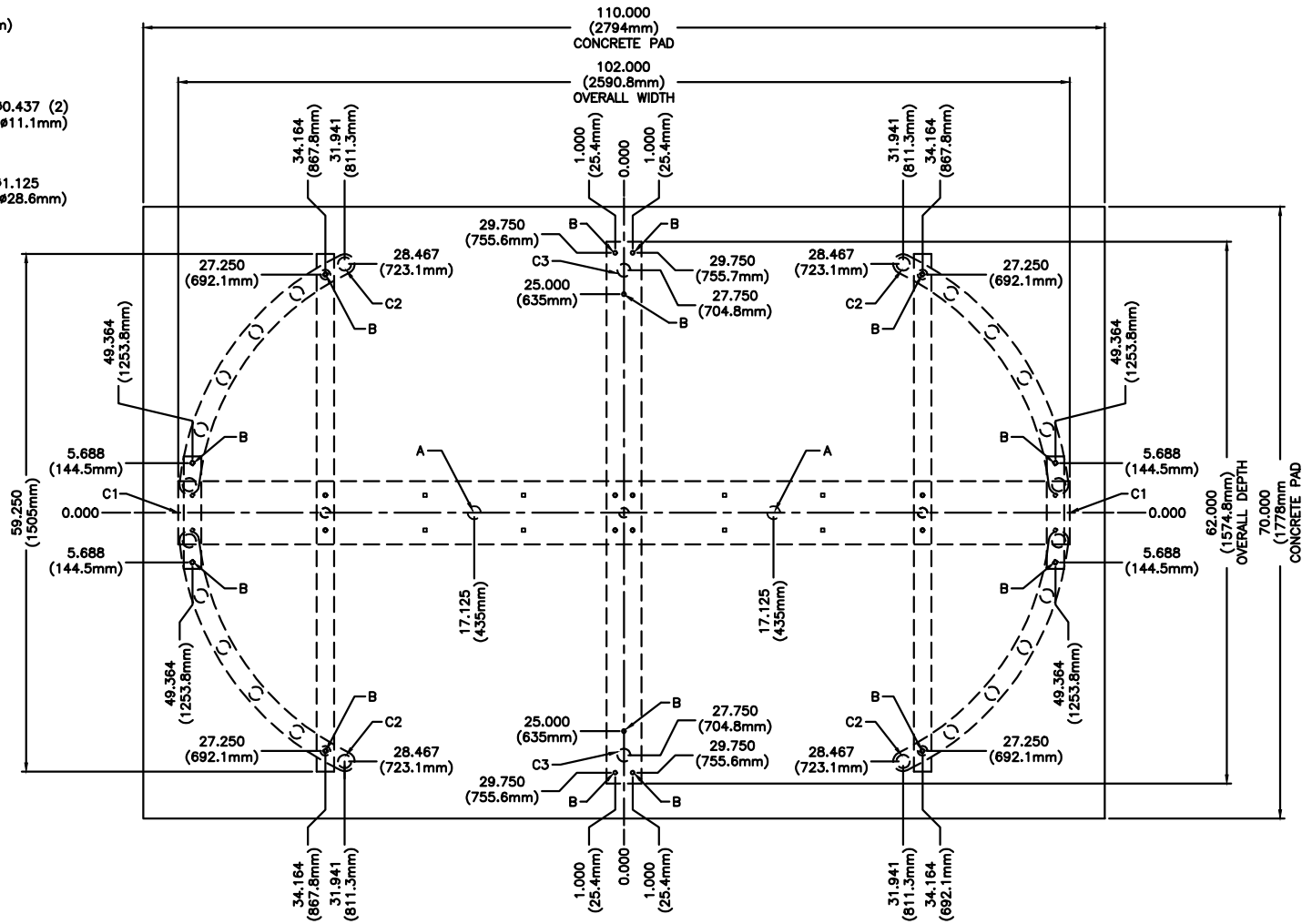
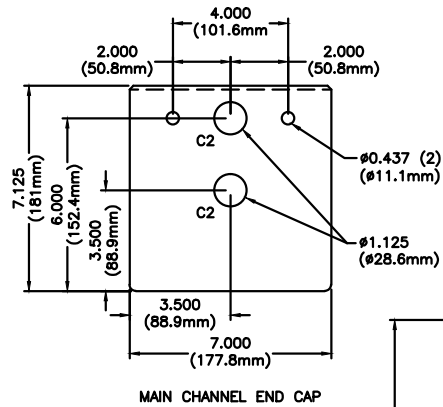


FOR USE ON GALVANIZED OR POWDER COATED
HS430-T MODELS



ANCHOR POINTS

A = $\phi .625$ X 4.500 STAINLESS STEEL CONCRETE ANCHOR QTY 2
B = $\phi .375$ X 4.500 STAINLESS STEEL CONCRETE ANCHOR QTY 12

SUGGESTED CONDUIT LOCATION

C1 = THROUGH MAIN CHANNEL END CAP (TYP BOTH SIDES)
C2 = THROUGH VERTICAL YOKE TUBE
C3 = THROUGH BARRIER VERTICALS

CONCRETE PAD NOTE:

POUR PAD 4.000 (101.6mm) - 6.000 (152.4mm) THICK,
AND INSURE IT IS LEVEL $\pm .125$ (3.1mm)

MATERIAL:	SCALE: 1 = 20	APPROVED BY:	DRAWN BY: LC III
N/A	DATE: 1/10/18		REVISED: 10/2018

FINISH:	
TOL. UNLESS OTHERWISE SPEC.	
.X \pm .1	.XXX \pm .015
.XX \pm .03	ANGLES .5°

CONTROLLED ACCESS, INC.

330-273-6185
FAX 330-273-4468
USA 1-800-942-0829
FAX 1-800-942-0828

1636 West 130th Street
Brunswick, Ohio 44212

HS430-T-GV\PC ANCHOR POINTS\CONDUIT 2018

PROPRIETARY AND CONFIDENTIAL
THIS DRAWING IS THE PROPERTY OF CONTROLLED ACCESS, INC. AND CONTAINS PROPRIETARY INFORMATION. IT MAY NOT BE COPIED, REPRODUCED OR TRANSMITTED IN ANY MANNER TO A THIRD PARTY WITHOUT PRIOR WRITTEN PERMISSION OF CONTROLLED ACCESS, INC.