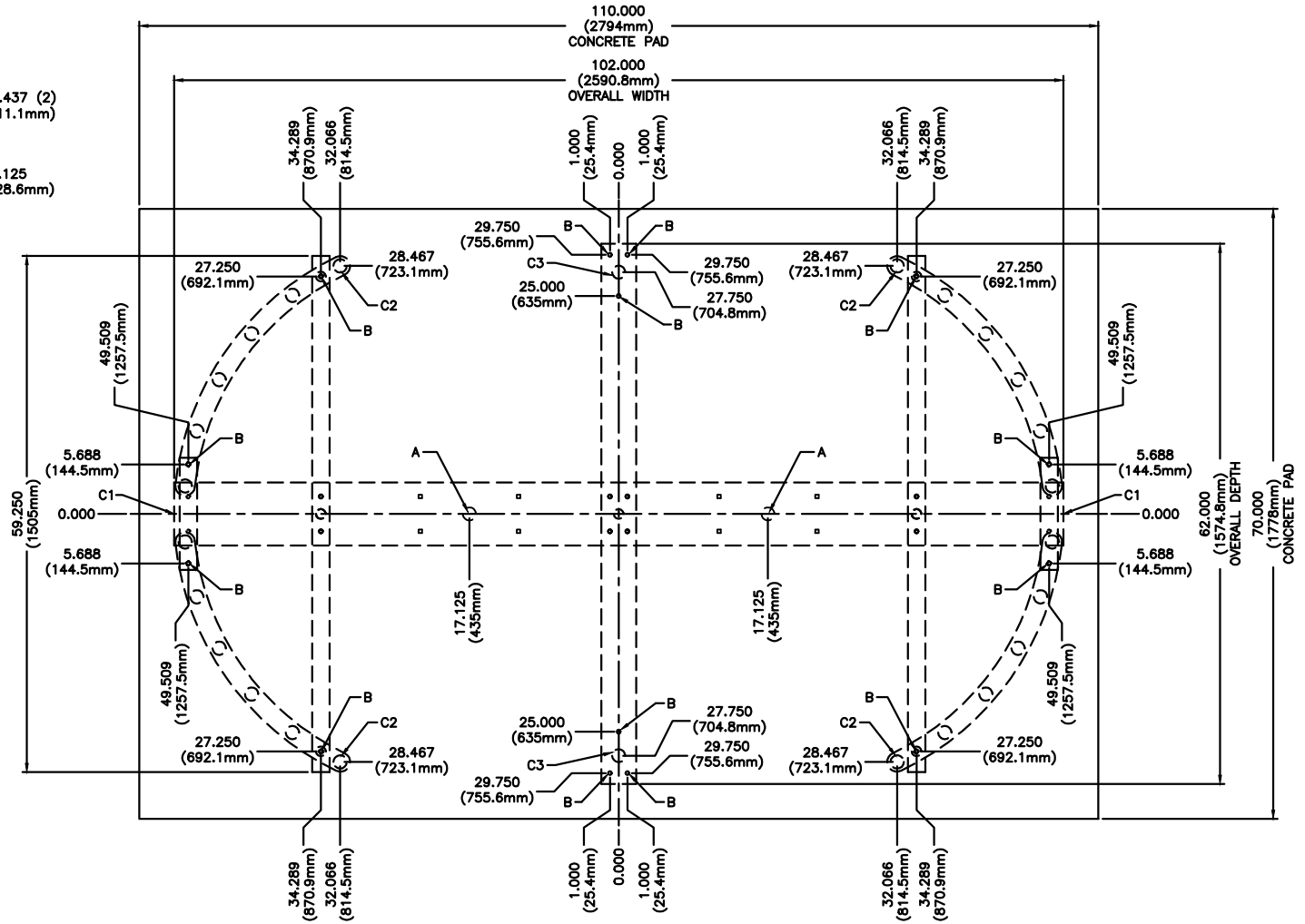
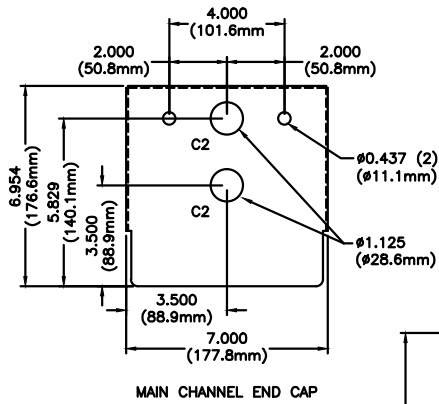


FOR USE ON STAINLESS STEEL HS430-T MODELS



**ANCHOR POINTS**

- A =  $\phi 0.625$  X 4.500 STAINLESS STEEL CONCRETE ANCHOR QTY 2
- B =  $\phi 0.375$  X 4.500 STAINLESS STEEL CONCRETE ANCHOR QTY 12

**SUGGESTED CONDUIT LOCATION**

- C1 = THROUGH MAIN CHANNEL END CAP (TYP BOTH SIDES)
- C2 = THROUGH VERTICAL YOKE TUBE
- C3 = THROUGH BARRIER VERTICALS

**CONCRETE PAD NOTE:**

POUR PAD 4.000 (101.6mm) - 6.000 (152.4mm) THICK, AND INSURE IT IS LEVEL  $\pm 0.125$  (3.1mm)

PROPRIETARY AND CONFIDENTIAL  
THIS DRAWING IS THE PROPERTY OF CONTROLLED ACCESS, INC. AND CONTAINS PROPRIETARY INFORMATION. IT MAY NOT BE COPIED, REPRODUCED OR TRANSMITTED IN ANY MANNER TO A THIRD PARTY WITHOUT PRIOR WRITTEN PERMISSION OF CONTROLLED ACCESS, INC.

MATERIAL: N/A	SCALE: 1 = 20	APPROVED BY:	DRAWN BY: LC III
	DATE: 1/10/18		REVISED: 10/2018
FINISH: TOL. UNLESS OTHERWISE SPEC. .X $\pm$ .1 .XX $\pm$ .03	<b>CONTROLLED ACCESS, INC.</b> 1636 West 130th Street Brunswick, Ohio 44212		330-273-6185 FAX 330-273-4468 USA 1-800-942-0829 FAX 1-800-942-0828

HS430-T-SS ANCHOR POINTS\CONDUIT 2018