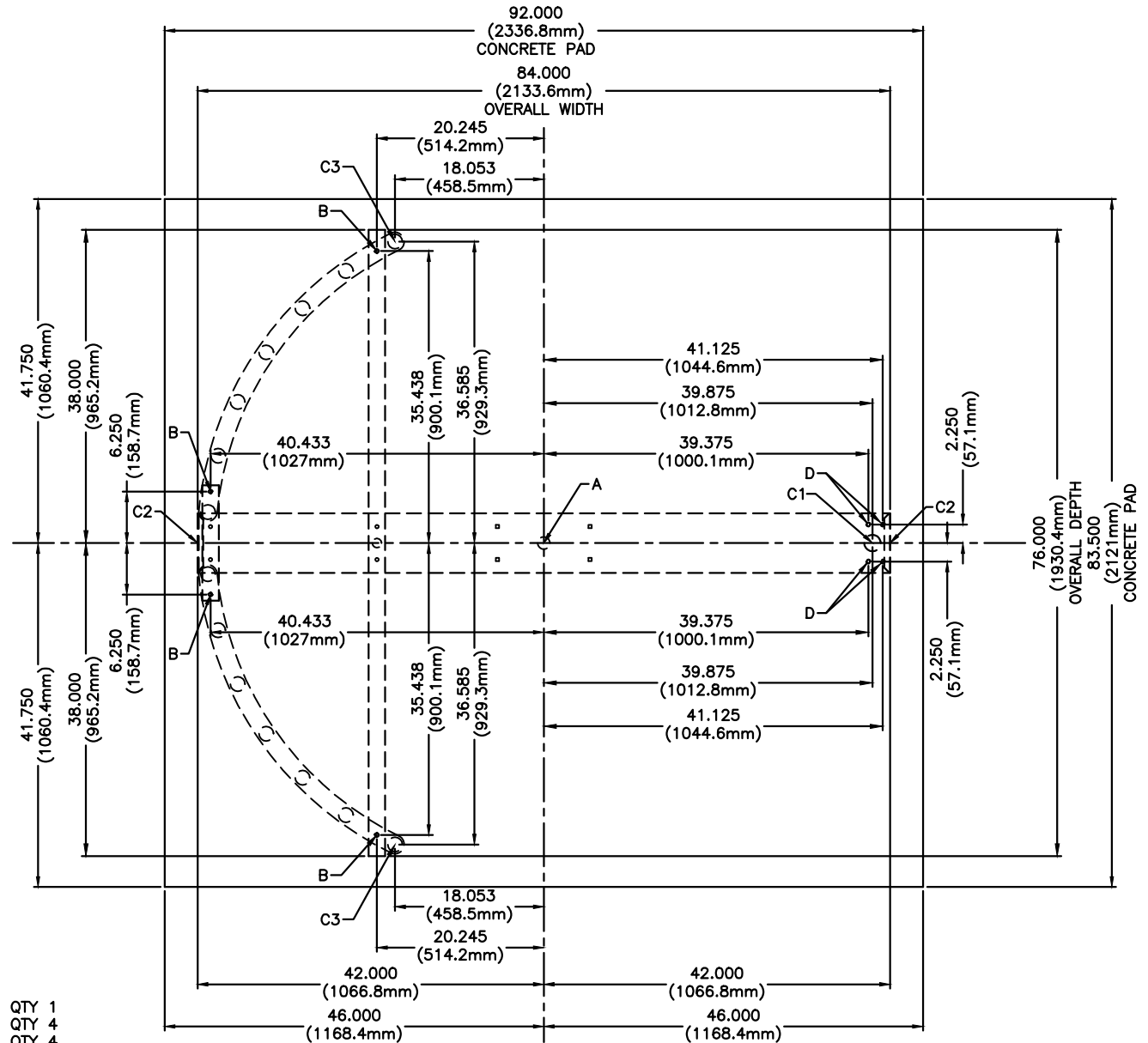
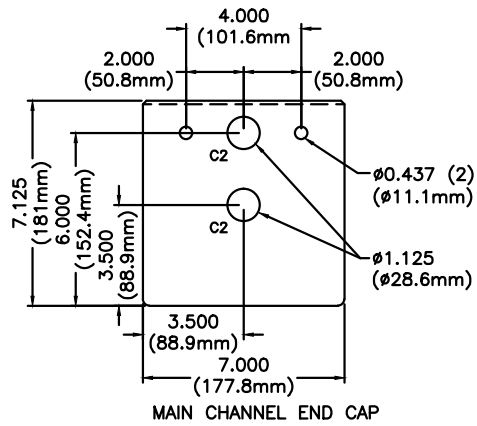


FOR USE ON GALVANIZED OR
POWDER COATED HS439-S MODELS



ANCHOR POINTS

- A = $\phi 0.625$ X 4.500 STAINLESS STEEL CONCRETE ANCHOR QTY 1
- B = $\phi 0.375$ X 4.500 STAINLESS STEEL CONCRETE ANCHOR QTY 4
- D = $\phi 0.500$ X 4.500 STAINLESS STEEL CONCRETE ANCHOR QTY 4

SUGGESTED CONDUIT LOCATION

- C1 = THROUGH VERTICAL BARRIER (PREFERRED)
- C2 = THROUGH MAIN CHANNEL END CAP (TYP BOTH SIDES)
- C3 = THROUGH VERTICAL YOKE TUBE

CONCRETE PAD NOTE:

POUR PAD 4.000 (101.6mm) - 6.000 (152.4mm) THICK,
AND INSURE IT IS LEVEL ± 0.125 (3.1mm)

MATERIAL:	SCALE: 1=20	APPROVED BY:	DRAWN BY: LC III
N/A	DATE: 1/13/14		REVISED: 10/2018

FINISH:	CONTROLLED ACCESS, INC. 1636 West 130th Street Brunswick, Ohio 44212	330-273-6185
TOL. UNLESS OTHERWISE SPEC.		FAX 330-273-4468 USA 1-800-942-0829 FAX 1-800-942-0828
.X \pm .1	.XXX \pm .015	
.XX \pm .03	ANGLES .5°	

PROPRIETARY AND CONFIDENTIAL
THIS DRAWING IS THE PROPERTY OF CONTROLLED ACCESS, INC., AND CONTAINS PROPRIETARY INFORMATION. IT MAY NOT BE COPIED, REPRODUCED OR TRANSMITTED IN ANY MANNER TO A THIRD PARTY WITHOUT PRIOR WRITTEN PERMISSION OF CONTROLLED ACCESS, INC.

HS439-GVPC ANCHOR POINTS\CONDUIT 2018