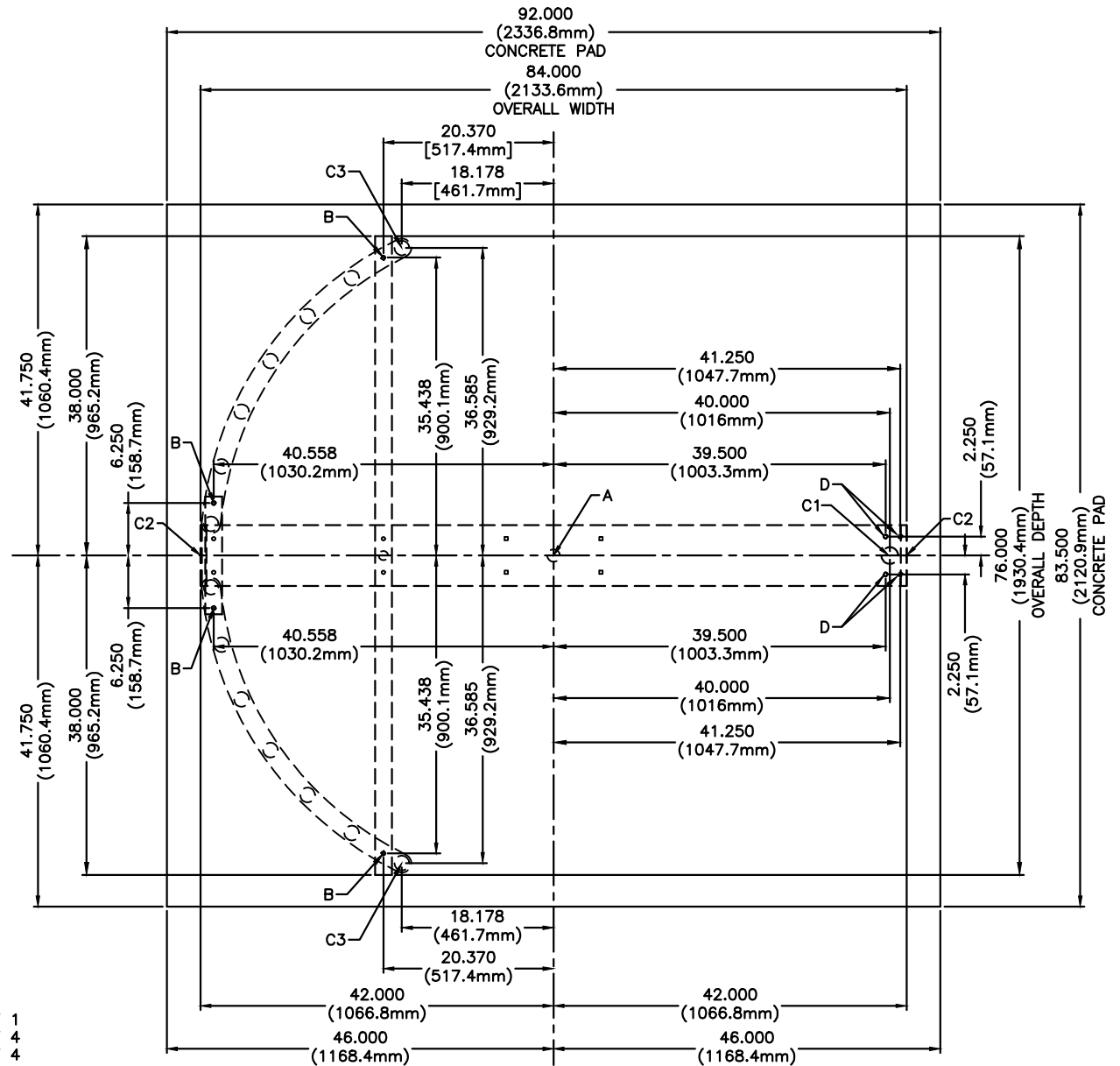
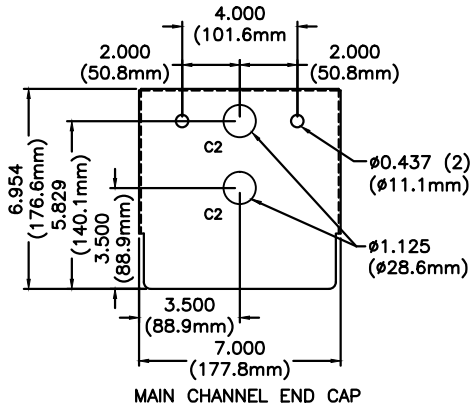


FOR USE ON STAINLESS STEEL  
HS439-S MODELS



**ANCHOR POINTS**

- A= Ø.625 X 4.500 STAINLESS STEEL CONCRETE ANCHOR QTY 1
- B= Ø.375 X 4.500 STAINLESS STEEL CONCRETE ANCHOR QTY 4
- D= Ø.500 X 4.500 STAINLESS STEEL CONCRETE ANCHOR QTY 4

**SUGGESTED CONDUIT LOCATION**

- C1 = THROUGH VERTICAL BARRIER (PREFERRED)
- C2 = THROUGH MAIN CHANNEL END CAP (TYP BOTH SIDES)
- C3 = THROUGH VERTICAL YOKE TUBE

**CONCRETE PAD NOTE:**

POUR PAD 4.000 [101.6mm] - 6.000 [152.4mm] THICK,  
AND INSURE IT IS LEVEL ±.125 [3.1mm]

MATERIAL:	SCALE: 1=20	APPROVED BY:	DRAWN BY: LC III
304 STAINLESS STEEL	DATE: 1/13/14		REVISED: 10/2018

FINISH:	
TOL. UNLESS OTHERWISE SPEC.	
.X ± .1	.XXX ± .015
.XX ± .03	ANGLES .5°

**CA CONTROLLED ACCESS, INC.**  
1636 West 130th Street  
Brunswick, Ohio 44212

330-273-6185  
FAX 330-273-4468  
USA 1-800-942-0829  
FAX 1-800-942-0828  
HS439-SS ANCHOR POINTS\CONDUIT 2018

PROPRIETARY AND CONFIDENTIAL  
THIS DRAWING IS THE PROPERTY OF CONTROLLED ACCESS, INC., AND CONTAINS PROPRIETARY INFORMATION. IT MAY NOT BE COPIED, REPRODUCED OR TRANSMITTED IN ANY MANNER TO A THIRD PARTY WITHOUT PRIOR WRITTEN PERMISSION OF CONTROLLED ACCESS, INC.