

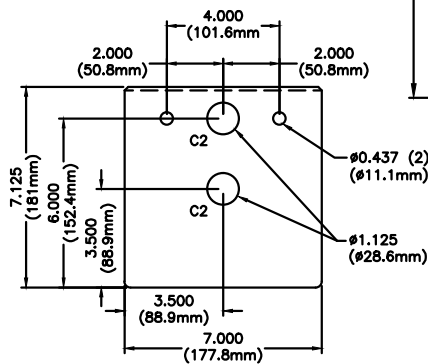
FOR USE ON GALVANIZED OR POWDER COATED
HS448 MODELS

DO NOT SCALE DRAWING

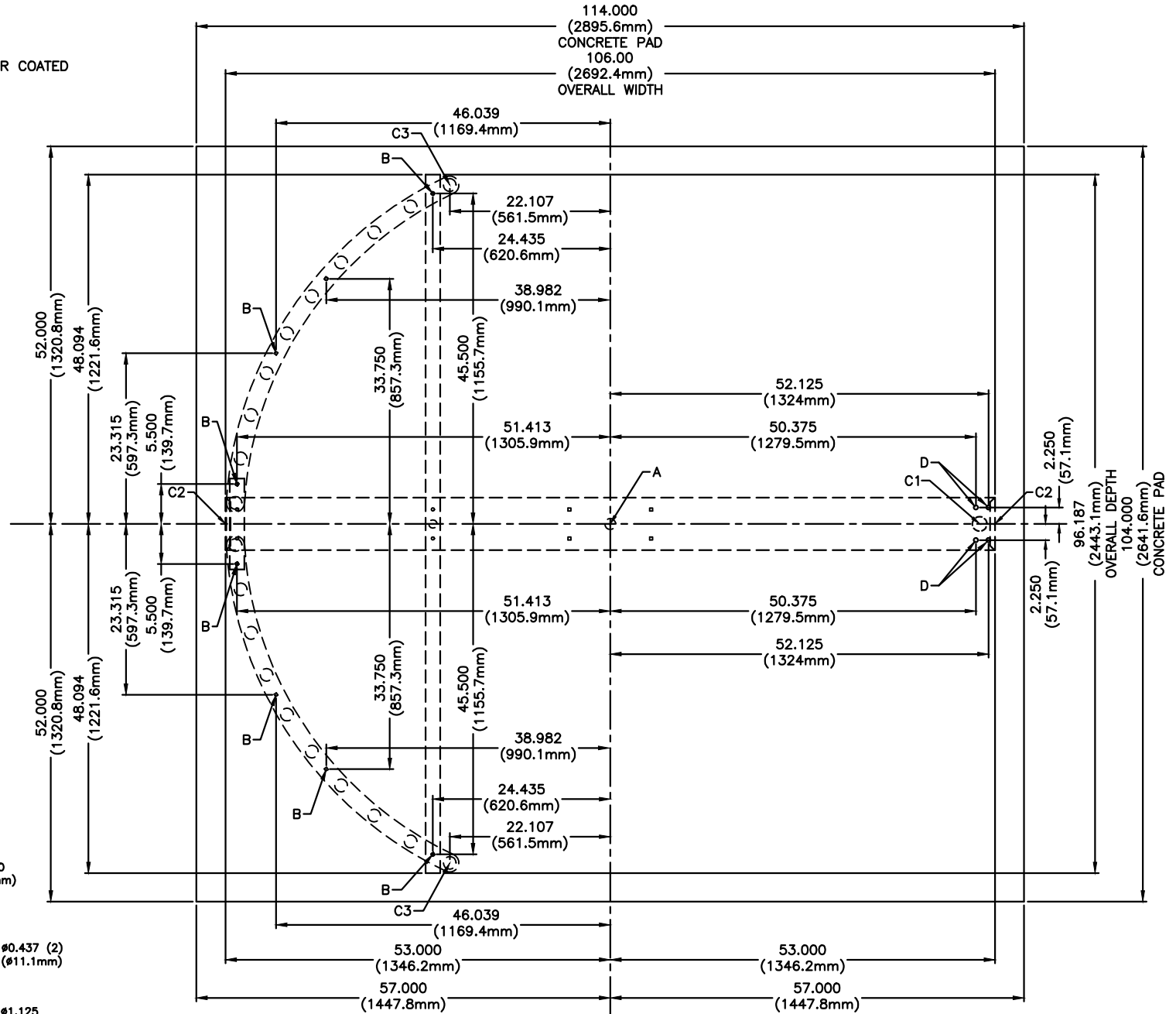
ANCHOR POINTS
A= #625 X 4.500 STAINLESS STEEL CONCRETE ANCHOR QTY 1
B= #375 X 4.500 STAINLESS STEEL CONCRETE ANCHOR QTY 8
D= #500 X 4.500 STAINLESS STEEL CONCRETE ANCHOR QTY 4

SUGGESTED CONDUIT LOCATION
C1 = THROUGH VERTICAL BARRIER (PREFERRED)
C2 = THROUGH MAIN CHANNEL END CAP (TYP BOTH SIDES)
C3 = THROUGH VERTICAL TOKE TUBE

CONCRETE PAD NOTE:
FOUR PAD 4.000 (101.6mm) - 6.000 (152.4mm) THICK,
AND INSURE IT IS LEVEL ±.125 (3.1mm)



MAIN CHANNEL END CAP



MATERIAL: N/A	SCALE: NTS DATE: 1/14/14	APPROVED BY:	DRAWN BY: LC III REVISED: 4/2019
FINISH: TOL. UNLESS OTHERWISE SPEC. .X ± .1 .XXX ± .015 .XX ± .03 ANGLES .5°	CONTROLLED ACCESS, INC. 1636 West 130th Street Brunswick, Ohio 44212		330-273-6185 FAX 330-273-4468 USA 1-800-942-0829 FAX 1-800-942-0828

PROPRIETARY AND CONFIDENTIAL
THIS DRAWING IS THE PROPERTY OF CONTROLLED ACCESS, INC., AND CONTAINS PROPRIETARY INFORMATION. IT MAY NOT BE COPIED, REPRODUCED OR TRANSMITTED IN ANY MANNER TO A THIRD PARTY WITHOUT PRIOR WRITTEN PERMISSION OF CONTROLLED ACCESS, INC.

HS448-GV\PC ANCHOR POINTS\CONDUIT 2019