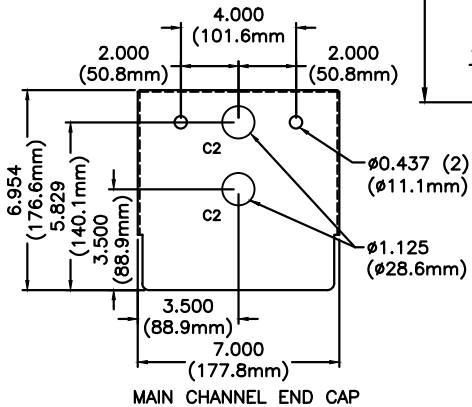
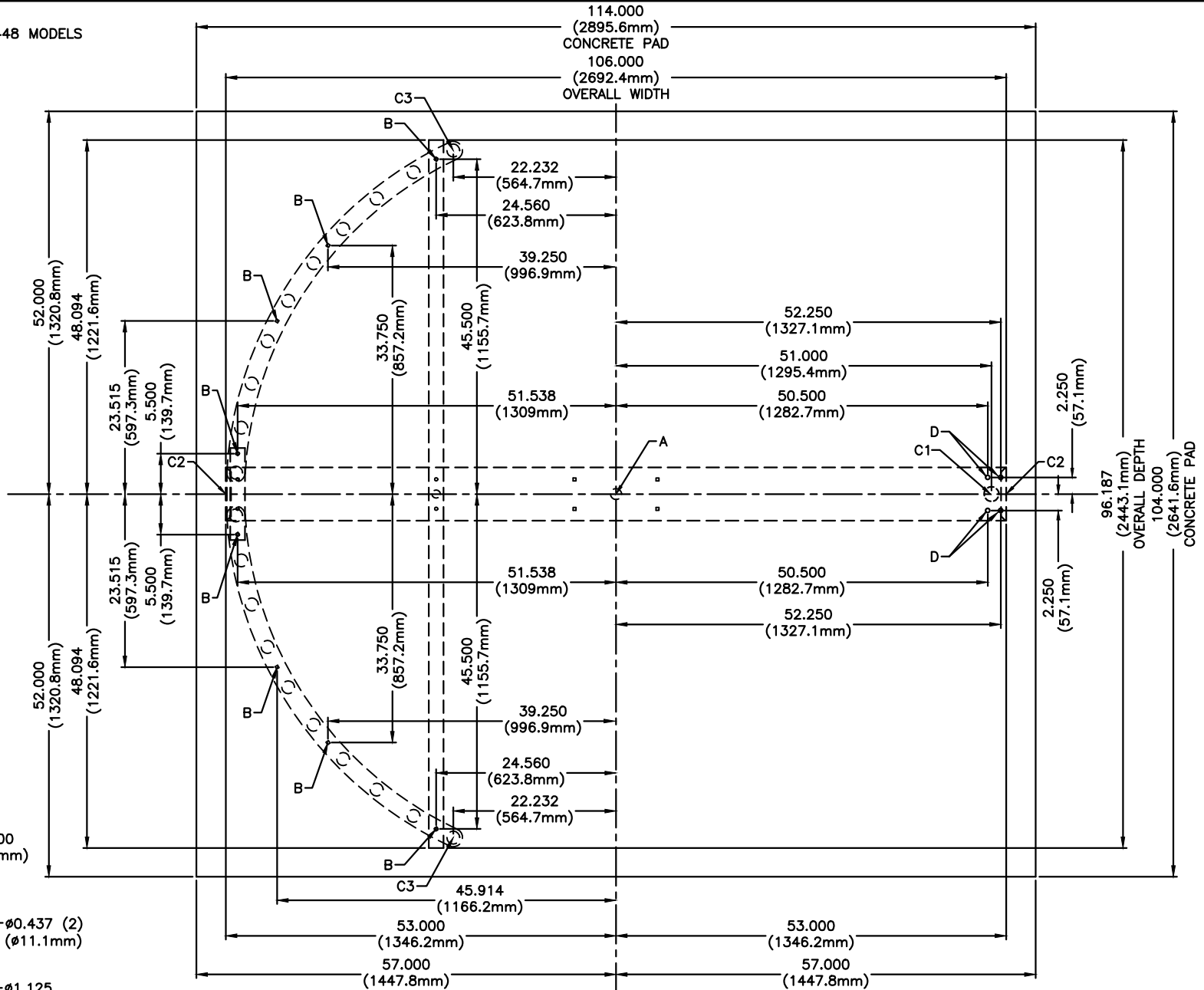


FOR USE ON STAINLESS STEEL HS448 MODELS

ANCHOR POINTS
 A= ϕ .625 X 4.500 STAINLESS STEEL CONCRETE ANCHOR QTY 1
 B= ϕ .375 X 4.500 STAINLESS STEEL CONCRETE ANCHOR QTY 8
 D= ϕ .500 X 4.500 STAINLESS STEEL CONCRETE ANCHOR QTY 4

SUGGESTED CONDUIT LOCATION
 C1 = THROUGH VERTICAL BARRIER (PREFERRED)
 C2 = THROUGH MAIN CHANNEL END CAP (TYP BOTH SIDES)
 C3 = THROUGH VERTICAL YOKE TUBE

CONCRETE PAD NOTE:
 POUR PAD 4.000 [101.6mm] - 6.000 [152.4mm] THICK,
 AND INSURE IT IS LEVEL \pm .125 [3.1mm]



MATERIAL: 304 STAINLESS STEEL	SCALE: 1=20	APPROVED BY:	DRAWN BY: LC III
FINISH: TOL. UNLESS OTHERWISE SPEC. .X \pm .1 .XXX \pm .015 .XX \pm .03 ANGLES .5°	DATE: 1/14/14		REVISED: 4/2019

PROPRIETARY AND CONFIDENTIAL
 THIS DRAWING IS THE PROPERTY OF CONTROLLED ACCESS, INC. AND CONTAINS PROPRIETARY INFORMATION. IT MAY NOT BE COPIED, REPRODUCED OR TRANSMITTED IN ANY MANNER TO A THIRD PARTY WITHOUT PRIOR WRITTEN PERMISSION OF CONTROLLED ACCESS, INC.

CONTROLLED ACCESS, INC.
 1636 West 130th Street
 Brunswick, Ohio 44212

330-273-6185
 FAX 330-273-4468
 USA 1-800-942-0829
 FAX 1-800-942-0828

HS448-SS ANCHOR POINTS\CONDUIT 2018